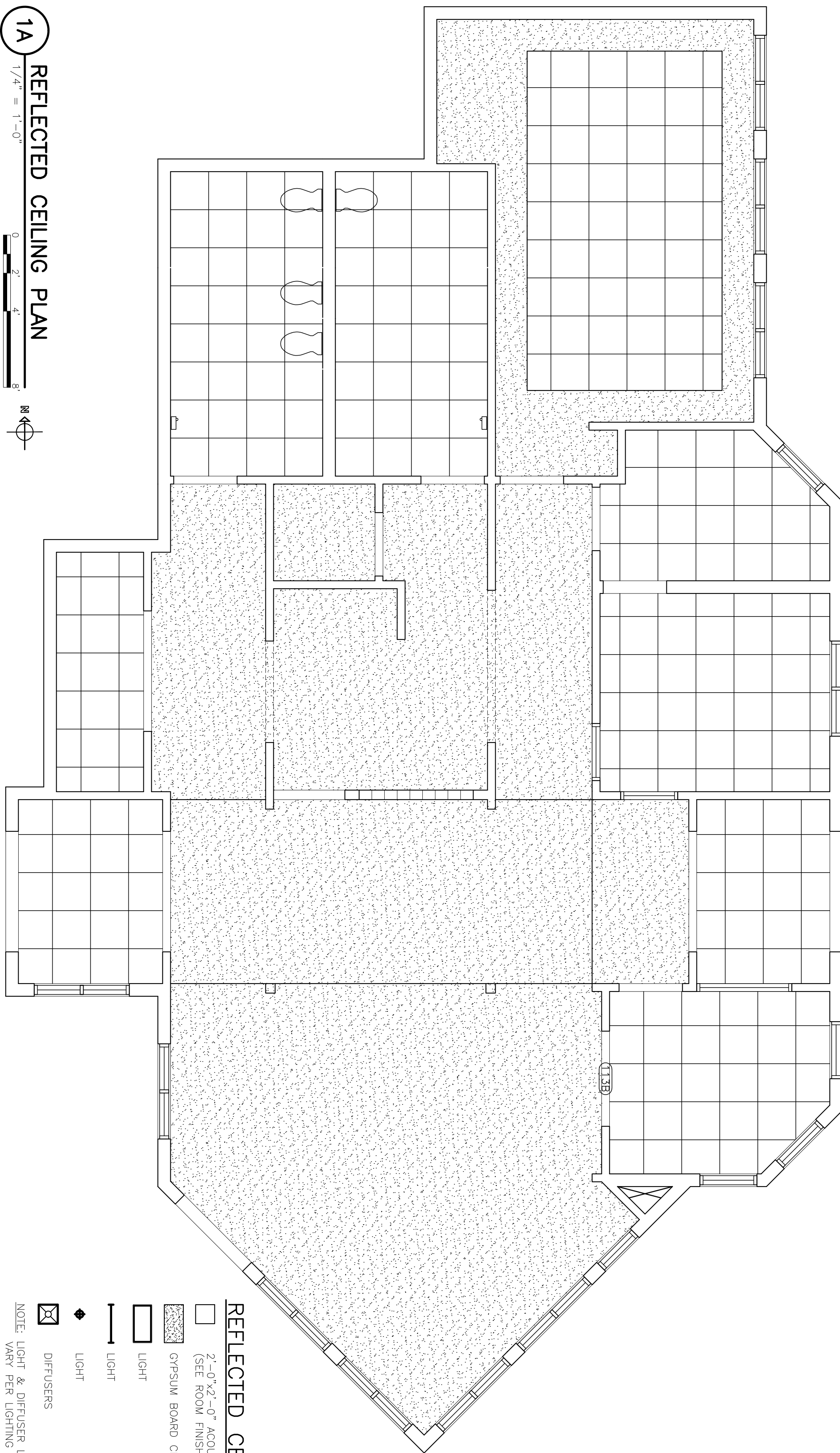
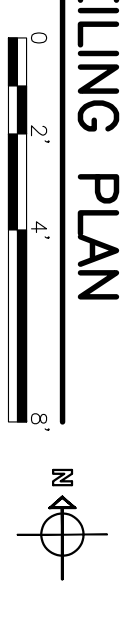


1A
REFLECTED CEILING PLAN
1/4" = 1'-0"



REFLECTED CEILING LEGEND

□ 2'-0" x 2'-0" ACOUSTICAL TILES, TYPICAL
(SEE ROOM FINISH SCHEDULE FOR TYPES)

▨ GYPSUM BOARD CEILING

□ LIGHT

□ LIGHT

□ LIGHT

◆ LIGHT

⊠ DIFFUSERS

NOTE: LIGHT & DIFFUSER LAYOUT MAY VARY PER LIGHTING & HVAC DESIGN

1L
ACCESSIBILITY PLAN
1/8" = 1'-0"

