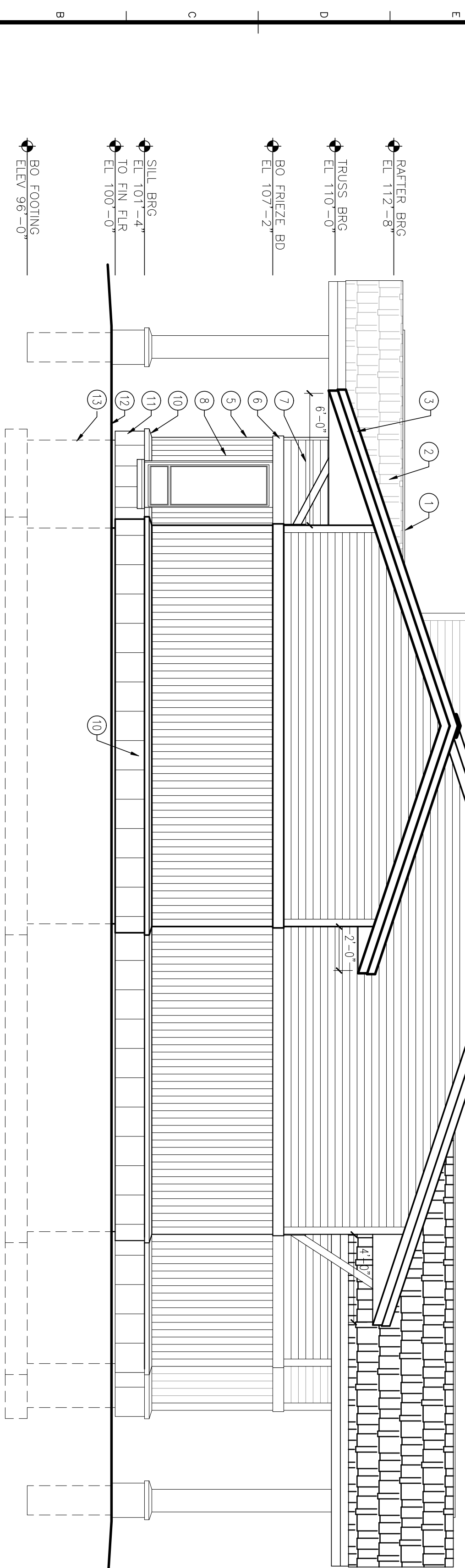


3K
1/4" = 1'-0"
0 2 4 8

- CONSTRUCTION NOTES**
- 1.) RIDGE VENT.
 - 2.) ASPHALT SHINGLES, OVER 30# FELT OR ICE & WATER SHIELD, OVER PLYWOOD SHEATHING.
 - 3.) PREFINISHED METAL FASCIA.
 - 4.) PREFINISHED METAL VENTED SOFFIT & ACCESSORIES.
 - 5.) 4" EXTERIOR CORNER TRIM PIECE.
 - 6.) 1x6 FRIEZE BOARD.
 - 7.) 4" HORIZONTAL SIDING.
 - 8.) 4" VERTICAL SIDING.
 - 9.) 12" VERTICAL SIDING.
 - 10.) PRECAST CONC SILL.
 - 11.) 1'-4" SQ STONE PANELS W/ SPILT FACE TEXTURE.
 - 12.) GRADE. SLOPE AWAY FROM BUILDING.
 - 13.) REINFC CONC FOUNDATION WALL & FOOTING (SEE STRUCT)
 - 14.) CONC STOOP (SEE STRUCT)
 - 15.) COLUMN.
 - 16.) 4x4 BRACKET.
 - 17.) 1'-0"x1'-0"x3/4" BRACKET PLATE.
 - 18.) PREFINISHED METAL LETTERS.



3A
1/4" = 1'-0"
0 2 4 8



Short Elliott Hendrickson Inc.
421 Frenette Drive
Chippewa Falls, WI 54729-3374
715.720.6200 main | 715.720.6300 fax
800.472.5881 toll free | www.sehinc.com

MENOMONIE AIRPORT TERMINAL
MENOMONIE, WISCONSIN

SEH FILE NO. WIBOA 106410
ISSUE DATE JAN 20, 2009
DESIGNED BY RJS
DRAWN BY KLL
PROJECT MGR I

SHEET CONTENTS
EXTERIOR ELEVATIONS

A201